



Prepared by:
Fiona Neilson
March 2007

Tricks of the Trade

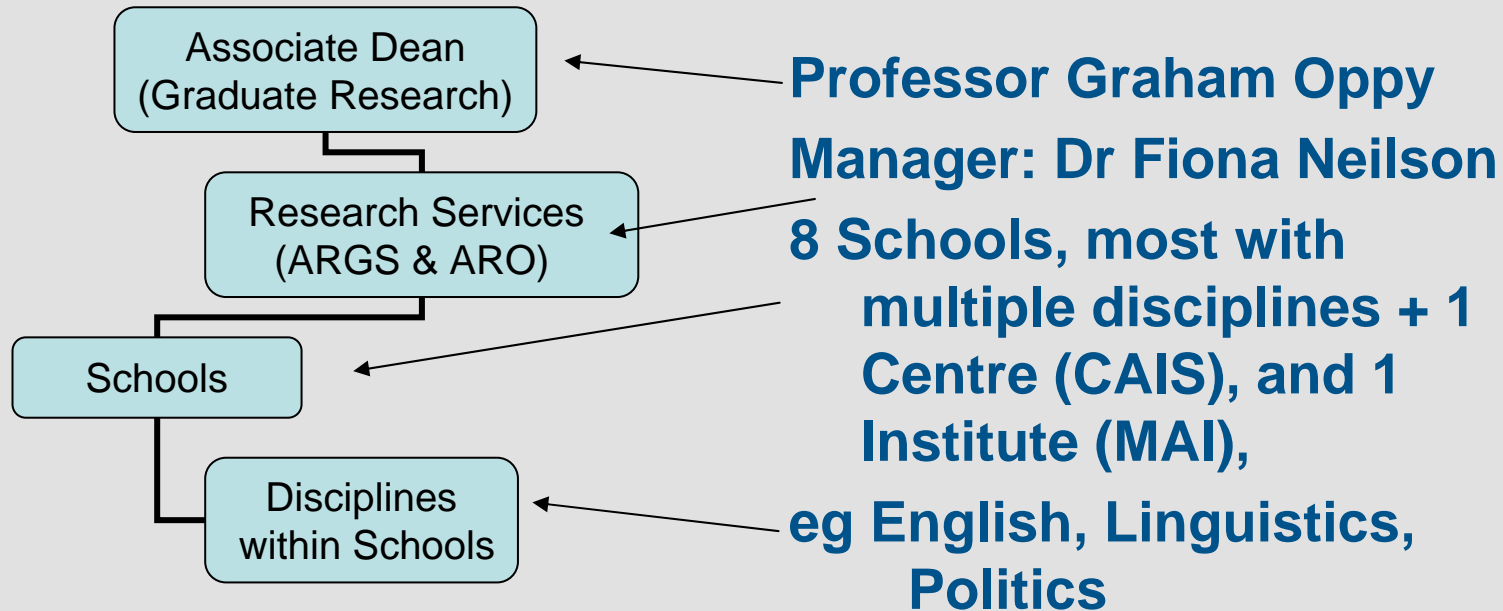
20 March 2007

Welcome to research in Arts!

INDEX

- Research structure in Arts
- School responsibilities
- ARGS & MRGS
- Forms
- Regulations & Survival Guide
- Questions

Research in the Faculty of Arts



Role of School & Academic Staff

- Supervision & research training of candidates
- First port-of-call for problems/queries
- Confirmation/Review of candidature panels - makes a recommendation to ARGS/MRGS
- Candidature changes – sends to ARGS/MRGS
- Reporting days
- Annual progress reports
- Recommend appropriate thesis examiners
- Etc.

ARGS/MRGS - Who does what?

Masters candidates

Arts Research Graduate School (ARGS)

Masters

- Offers of candidature
- Enrolment
- Faculty scholarships
- Changes to candidature & supervision
- Annual Progress Reports
- Vets upgrades to PhD
- Thesis examination

ARGS/MRGS - Who does what?

PhD candidates

ARGS

PhD

- Makes recommendation to MRGS for admission to candidature
- Faculty scholarships
- Faculty approval of supervisory changes
- Vets Confirmation of Candidature
- Coordinates Mid Candidature Review

Monash Research Graduate School (MRGS)

PhD

- Offers of candidature
- Enrolment
- Changes to candidature
- Final decision on Confirmation of Candidature
- Annual Progress Reports
- Thesis examination

ARGS/MRGS - Who does what?

Scholarships, Grants & Research Training

ARGS

- Travel grants applications (forwarded from ARGS to MRGS)
- Top-up travel grants
- Faculty Scholarships
- Tricks of the Trade

MRGS

- Travel grants applications – notification of outcome
- Scholarships (APA/MGS/IPRS/ MIPRS), incl. payment of scholarship stipends and variations to scholarships
- exPERT seminars

Where are the forms? PhD

PhD forms

<http://www.mrgs.monash.edu.au/research>

- Variations to candidature
- Confirmation of candidature
- Thesis examination forms

Grant forms

<http://www.mrgs.monash.edu.au/scholarships/>

- Travel grant application
- Conference Organisers grants, etc.

Where are the forms? (cont'd)

Masters

Masters forms – on ARGS website

www.arts.monash.edu.au/research/candidature_forms/index.html

- **Variations to candidature**
- **Application for study away**
- **Change of supervisor**

Travel grant applications: same as for PhDs -
see previous slide

REGULATIONS

Doctoral Information Handbook

Contains everything and more that you ever wanted to know about a Monash PhD

<http://www.mrgs.monash.edu.au/research/doctoral/index.html>

Note: The '**Code of practice**' for doctoral and MPhil students can be found in section 5.2. Also **applies to Arts Masters candidates** and their supervisors.

SURVIVAL GUIDE

Drowning? Lost? Generally looking for advice?

The **Survival Guide** comes to the rescue! Produced by the ARGS specifically for the benefit of Masters students and their Supervisors but is also useful for PhD students. Search the Monash website for 'Survival' or go to

<http://www.arts.monash.edu.au/research/survival/index.html>

CONTACT DETAILS

Contact the ARGS: args@arts.monash.edu.au
2nd floor, west wing, Menzies

Phone ARGS staff

Fiona Neilson	9905 8310
Michelle Cook (from April)	9905 2105
Merci Ikeda	9905 1444
Peachy Vasquez	9905 1444
Ann Ng	9905 5447