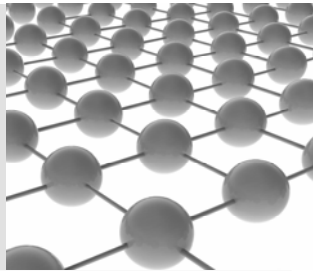




The
Monash
e-Research Centre
(MeRC)
&
'e-Research'



MeRC is an initiative of the DVC Research to support researchers, by harnessing the resources and capacities of the IT Services Division, the Library and computer scientists in the Faculty of Information Technology to create

"...ICT services that enhance research capability"

What is e-Research?



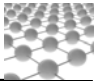
e-Research is the use of a range of information and communications technologies to support global collaborative research, localised research and research requiring advanced computing.

Key areas of e-Research:

- Collaboration Environments
- High Performance Computing
- Data Storage and Management



How can e-Research assist you?

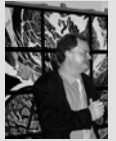


...By enabling faster, better, more secure and more creative research

Collaboration Environments: Real-time, online video collaboration and web spaces. EVO, Sakai, Lotus Quickr, Confluence, Twiki, Word Press, High Definition Video (HDV) teleconferencing, OptiPortal visualisation wall

High Performance Computing & Monash facilities: Monash Sun Grid – central Monash compute facility, Monash SPONGE – harvested capacity on desktop computers, Brecca, compute cluster facilities enabling advanced algorithms, computational modelling, etc.
Also, access to national and international facilities

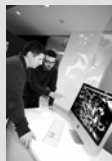
Data Storage & Management: Large, secure, backed up data storage on LaRDS facility, e-Notebooks backed up onto LaRDS, ARCHER, MediaFlux, data mining capabilities



What services are provided by MeRC?



- Specialist advice
- Customised ICT solutions
- On-going support and platforms throughout a research project
- Seminars and outreach

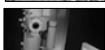
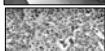


Who do we contact?

Anthony Beitz (Technical Manager MeRC) ext. 20584
Neil Clarke (Director of ITS - RSS) ext. 54775
Paul Bonnington (Director MeRC) ext. 20711
David Abramson (Associate Director MeRC) ext. 51183
Debra Truin (Manager Outreach & Education MeRC) ext. 20797

email Monash e-Research Centre: merc@adm.monash.edu.au

Instruments



Building generic tools for a secure, seamless, and collaborative e-Research space

- Dataset Acquisition
- Dataset Management (Web)
- Dataset Management (Desktop)
- Collaborative Workspaces
- Workflow Automation
- Metadata Management

Acquire



Institutional Repositories Computational Grids

Publication Repositories

